

Building Systems UK

A Tata Steel enterprise



Trisofix™

Universal mounting system



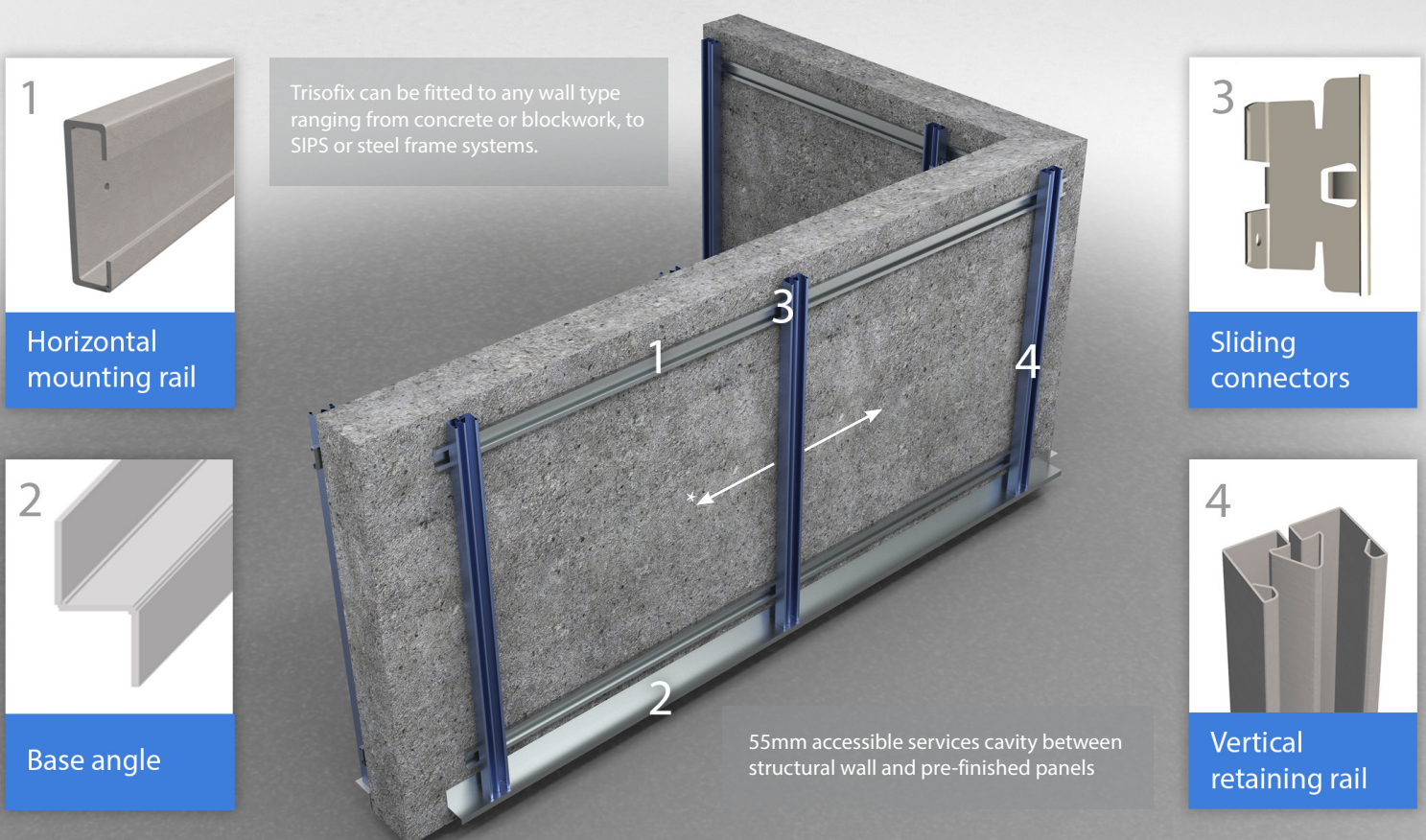
Trisofix™

Universal mounting system

Trisofix™ a simple to use patented universal mounting system. Combined with pre-finished panels and products it creates a true DfMA solution that unlocks both off-site and on-site productivity. Trisofix™ enables lower carbon, cost and time certain project delivery.

- Made using high grade coated steel components the Trisofix™ mounting system fixes back to any structural wall type and can be used throughout a building, both for façades and internal fit out.
- Typically Trisofix's Fast Fit clip is factory fitted to prefinished panels but can also be fitted on site offering hybrid functionality and flexibility for installers.
- Trisofix creates a 55mm cavity behind prefinished panels, which when combined with the individual panel demounting, provides easy access to any services behind, simplifying and speeding up M&E installation.
- The robust clip can be continually reinstalled without compromising strength or integrity, and allows panels and products to be removed, replaced, relocated and reused.
- While Trisofix™ is fast to fit, the mounting system combines its usability with exceptional strength and durability credentials.

Component Guide



*The sliding connectors allow for the simple movement of the vertical retaining rails to be positioned along the horizontal mounting rail in relation to the panel that is being applied.

Base Angle

Fixed back to the structural wall, the base angle creates a level support for the retainers and wall panels combined with being an interface for skirting or vinyl flooring.

Specification	2.0mm S280 G275
Dimensions	52 x 62 x 85mm Z angle
Weight	3.12 kg / lm
Standard Lengths	1500 & 3000mm
Load resistance	1.2kN load



Horizontal Mounting Rail

Fixed back to the structural wall, the mounting rails facilitates flexibility of panel location and speed of installation along with creating a 55mm depth for the service cavity / ventilated rainscreen.

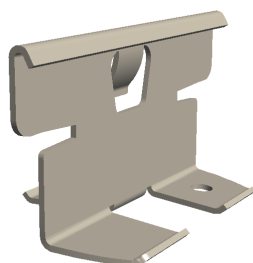
Specification	1.6 mm S280 G275
Dimensions	55 x 21 x 10mm Lipped C
Weight	1.21 kg / lm
Standard Lengths	1500 & 3000mm
Load resistance	Fixed up to 600mm span



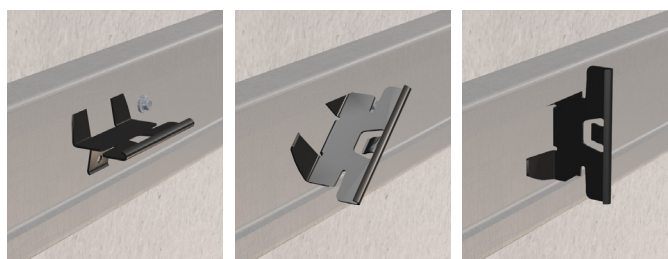
Sliding Connector

Installed via a twist fix into the mounting rail the connector enables tool free installation of the vertical retainers and slides side to side within the mounting rail, offering flexibility of positioning reducing the need for accurate on site measuring.

Specification	0.7mm Heat Treated steel with protective e-coating
Dimensions	62 x 35mm
Weight	37g
Pull out resistance	5kN per connector



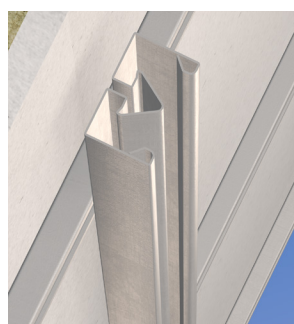
Below illustrates twist fit and sliding mechanism



Vertical Retainer

A quick, tool free push fit into the sliding connector and mounting rail to provide full length support and clamping for pre-finished panels, louvres and window shrouds.

Specification	1.0mm S250 GA275
Dimensions	53 x 43mm roll formed rail
Weight	1.735 kg / lm



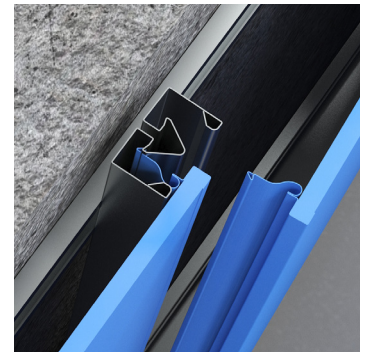
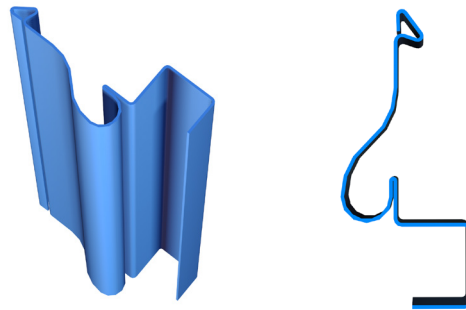
Pull out resistance:
5kN
Working Load:
3kN per connection

Above illustrates sliding connector situated within vertical rail

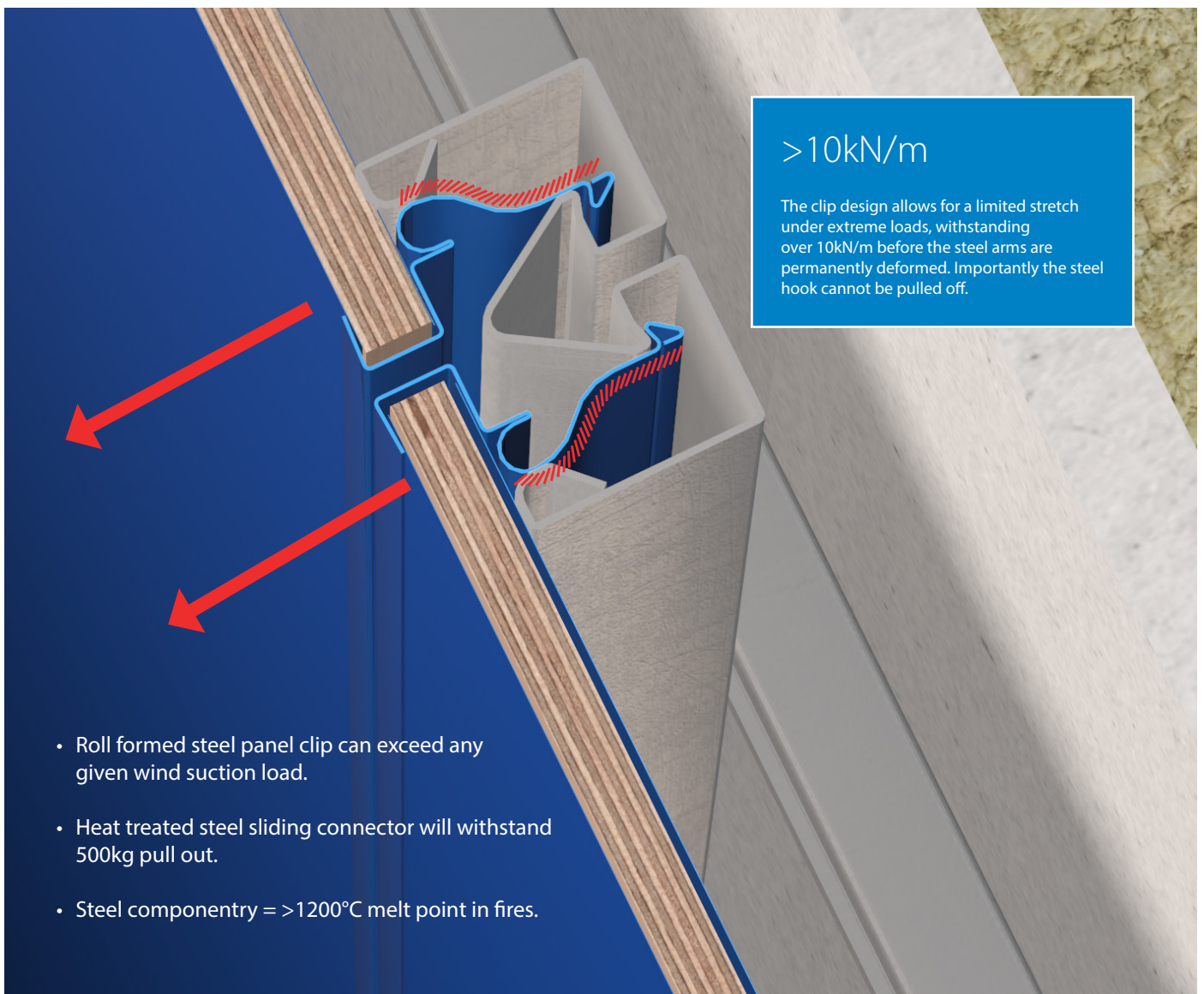
Fast Fit panel clip

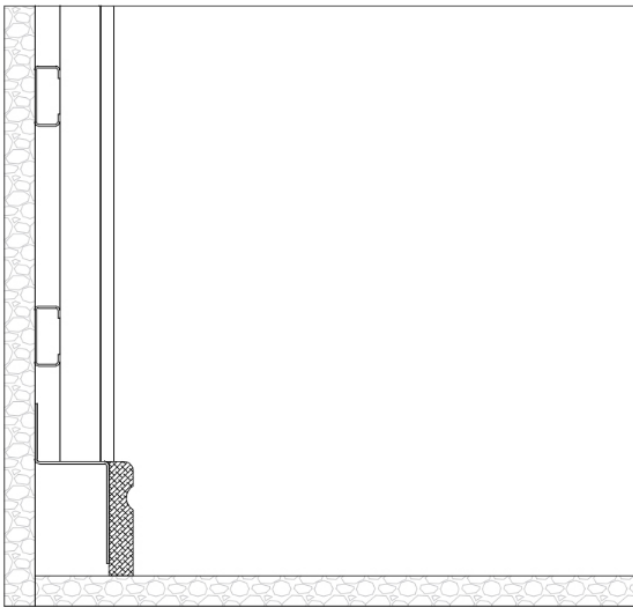
Designed to be factory or site fitted to panels, Fast Fit's roll formed steel clip allows panels to push fitted into the vertical retainer, automatically settling to the desired panel centres without the need to precisely measure and locate each fix.

Specification	0.50mm S250 Colorcoat®
Dimensions	17 x 43mm roll formed steel
Weight	0.385 kg / 1m
Pull out resistance	10kn per 1m

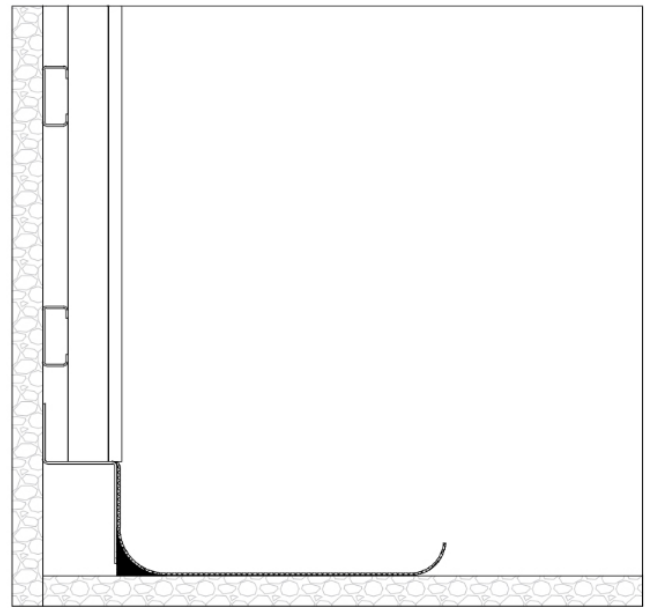


Note*: Once the clip hooks over the retainer's arrowhead its S250 grade steel provides exceptional strength and safety of fix for panels and products such as louvres or window shrouds.

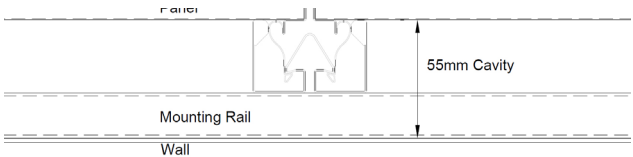




Base angle with wood skirting board



Base angle with coving PVC flooring



Top down view showing 55mm accessible services cavity

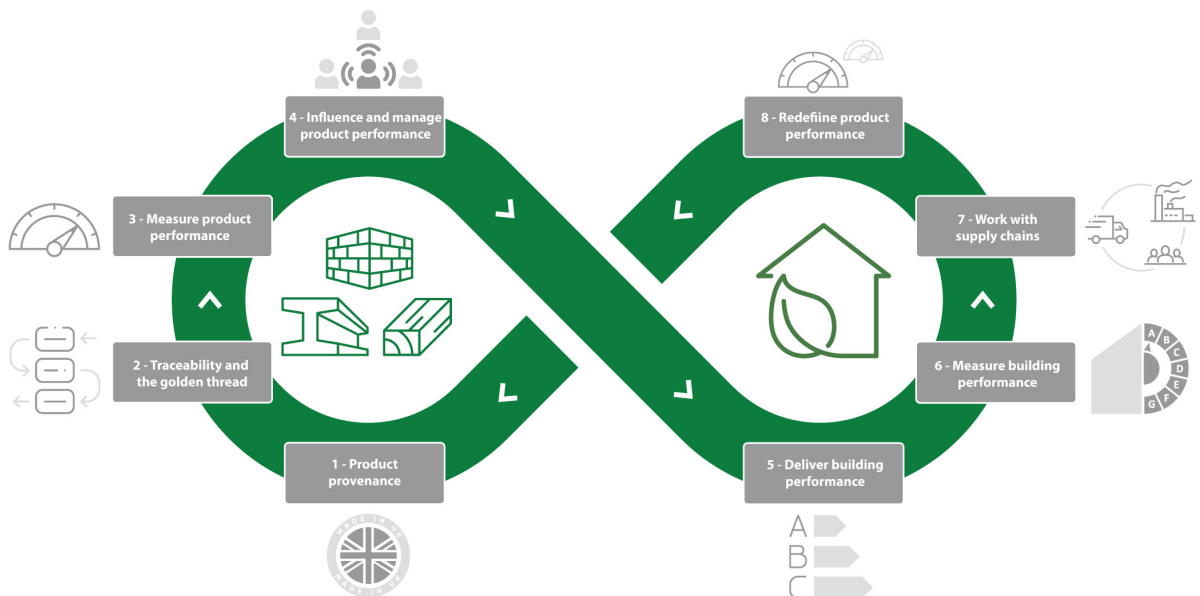
Steel... a high performance sustainable solution

Trisofix™ is manufactured and delivered as a kit of parts in order to minimise the environmental impact during construction and fit out.

One robust system reduces breakages / water damage during installation and minimises the use of sealants, glues, paints, further reducing waste disposal. Being perfectly suited for a circular economy, steel enables the reusage and recycling of many products and is a permanent material that is 100% recyclable with no loss of quality.

Most steel has already been recycled, and the rest will be recycled – always with no loss of its qualities. Strength, fire resistance, circular economy.

With an extended first use design life and zero degradation in materials properties when recycled, steel is unlike nearly all of the other construction materials, offering sustainability benefits throughout in-use and end of life phases of a building's life. Tata Steel UK's manufacturing processes are carefully controlled to the highest environmental quality standards and are ISO 14001 certified with the widest portfolio of construction products certified in the world.



www.buildingsystemsuk.com

Trademarks of Tata Steel UK Limited

While care has been taken to ensure that the information contained in this publication is accurate, neither Tata Steel, nor its subsidiaries, accept responsibility or liability for errors or for information which is found to be misleading.

Before using products or services supplied or manufactured by Tata Steel and its subsidiaries, customers should satisfy themselves as to their suitability.

Copyright 2024

Tata Steel UK Limited

Building Systems UK (A Tata Steel Enterprise)

Shotton

Deeside

Flintshire

CH5 2NH

United Kingdom

T: +44 (0) 1244 892199

E: technical.structuralproducts@tatasteelurope.com

Registered Office: 18 Grosvenor Place, London, SW1X 7HS, Registered in England No. 05957565