

## Catnic® Urban

Standing seam roof & wall cladding systems for residential buildings







# Build it better with Catnic

## Catnic® Urban, innovative snap-lock standing seam roof & wall cladding systems for residential buildings

Catnic® Urban (previously known as Colorcoat Urban®) is a fully supported standing seam system designed, manufactured and CE marked in accordance with BS EN 14783:2013. Quick build times are possible with neat crisp finishes to complement design and build choices.

Manufactured from Tata Steel's Colorcoat HPS200 Ultra®, and also available in Colorcoat Prisma®, Catnic® Urban is a cost-effective alternative to traditional copper and zinc

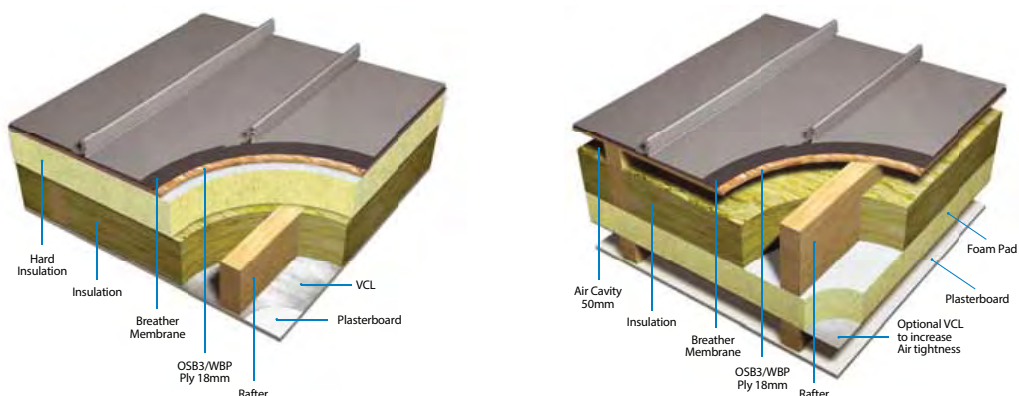
standing seam roof systems. Seven times lighter than tile equivalents, it is easy to handle on site and quick to fix compared with traditional roofing products.

Available in a range of colours, the system provides an original and modern roofline for any property; for pitched roofs as low as 5°.

### Key Benefits

- Quick fit system reduces installation time on site compared with traditional roofing products
- Supplied as a complete kit of parts to make your roof purchase as simple as possible
- Can be installed on a roof with a pitch as low as 5° making it ideal for extensions
- Seven times lighter than traditional roof tiles
- When installed as wall cladding, can be laid vertically or horizontally
- Available with 305mm or 514mm cover widths
- BRE Green Guide A+ rated product and 100% recyclable at end of life
- BBA Approved Roofing & Cladding System, Certificate No: 15/5279
- Materials and system build-up to meet fire classification requirements
- Certified to BES 6001 – a responsible sourcing standard
- CE Marked to BS EN 14783:2013
- Fully manufactured in the UK
- Robust Confidex® Home Guarantee for 25 years upon registration

Suitable for both warm and cold roof build-ups





# Services

Catnic® Urban comes with a range of services including guarantees, colour consultancy and expert advice and guidance built up over 50 years.

## Confidex® Home Guarantee

Catnic® Urban is available with the Confidex® Home Guarantee, the 25-year performance guarantee for Colorcoat HPS200 Ultra® and Colorcoat Prisma® when used for cladding homes in the UK and Ireland.

This Guarantee is “solar ready” - allowing you to install clip and fix solar panels on your roof at any point in the guarantee duration (see terms and conditions).

## British Board of Agrément Certificate

The strength and stability, weathertightness, condensation risk and durability of Catnic® Urban are certified by the BBA when used for both roof and wall cladding. Visit our website to download the certificates.

## Colour excellence

Excellent colour and gloss retention to the highest European standards, enable your roof to retain its colour for longer, with Galvalloy® metallic coating for ultimate corrosion resistance.

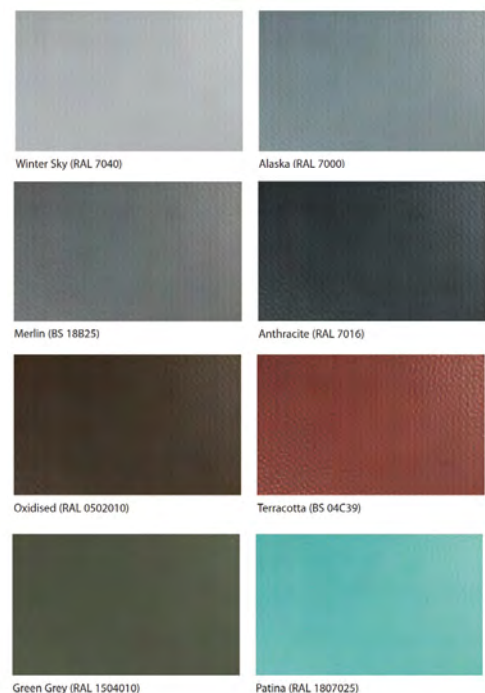
## Colour guide

A naturally inspired blend that is sympathetic to the urban landscape, ensuring harmonious integration with the surrounding environment. The tonal matt shades integrate seamlessly between different facades including glass, brick, wood, stone, and render delivering effortless modern finishes.

Colour swatch samples are available on request please contact [catnic.urban@tatasteeeurope.com](mailto:catnic.urban@tatasteeeurope.com) or call **01244 892449**

**Our standard range of Urban colours are available on short lead times.**

Wider colour range available, please ask for more info





### Ancillary products

For the complete solution for your project we supply a wide range of product to complement our Catnic® Urban standing seam system including Urban Seam®, gutters, fascia, plank profiles, roof and wall fabrications, bespoke fabrications, and accessories that are all designed to help you create an innovative, strong, durable, high performance, low maintenance home that you can be proud of.

### Quick Installation

Our quick fit system is provided with invisible fixings and has been developed specifically to offer fast, simple, on-site installation. We can provide technical assistance at the design stage and at the start of the installation and can provide a list of experienced installers across the UK. In addition, comprehensive installation and specification guides are available from Catnic on request.



Contact [catnic.urban@tatasteeleurope.com](mailto:catnic.urban@tatasteeleurope.com)  
or call **01244 892449**



# Sustainability

Catnic® Urban standing seam roof and cladding has been developed using eco-design principles, aimed at minimising the environmental impact of the product from raw material production all the way through to re-use or recycling. Sustainability features include:

## Solar ready

Developed to assist the designer in meeting the most stringent of future legislative requirements, Catnic® Urban standing seam roof and cladding has been designed to allow simple integration of photovoltaic solar thermal and /or passive solar heat collection roof panels.

## Cradle to Cradle

Catnic always ensures its products meet or exceed the performance regulations of current legislation. As part of Tata Steel Europe, we carefully measure the impact of Catnic® Urban throughout its life from cradle to cradle.

The steel used in Catnic® Urban is 100% recyclable with zero de-gradation in the materials properties when recycled, unlike nearly all other construction materials. All paint solvents are recycled through an incineration system to provide heat to the ovens and reduce the amount of natural gas used in the advanced curing process.

## BES 6001

BES 6001 delivers a method for us to benchmark and show that we are continuously improving our sustainability credentials. We have ensured Catnic® Urban standing seam roof and cladding has been certified to BES 6001 so you can rest assured that when specifying and installing this sustainable product you will maximise the potential for obtaining credits under the Responsible Sourcing of Materials sections of BREEAM







**catnic**<sup>®</sup>

A Tata Steel Enterprise

**Technical support**

If you love the look of our Catnic<sup>®</sup> Urban product and would like to know more about the technical details including wind loading, design details, specification, and installation, please contact our technical team on [catnic.urban@tatasteeleurope.com](mailto:catnic.urban@tatasteeleurope.com) or call **01244 892449**

## catnic.com

Care has been taken to ensure that the contents of this publication are accurate, but Tata Steel Europe Limited and its subsidiaries, which includes Tata Steel UK Limited, do not accept responsibility or liability for errors or information that is found to be misleading. Suggestions for, or descriptions of, the end use or application of products or methods of working are for information only and Tata Steel Europe Limited and its subsidiaries accept no liability in respect thereof.

Before using products or services supplied or manufactured by Tata Steel Europe Limited and its subsidiaries, customers should satisfy themselves as to their suitability.

Catnic reserves the right to change information contained within this brochure at any time.

© Copyright 2022 Tata Steel UK Limited

Catnic  
Pontypandy Industrial Estate  
Caerphilly  
CF83 3GL

T: **029 2033 7900**

F: **029 2086 7796**

**catnic.com**

English V1.0 - April 2022