

# #STEELMATTERS



## POWERING BRITAIN

Our Hartlepool site is renowned for its world-leading line pipe operation, which has produced

**1 million tonnes of line pipe**

for North Sea oil and gas projects in the last 20 years.

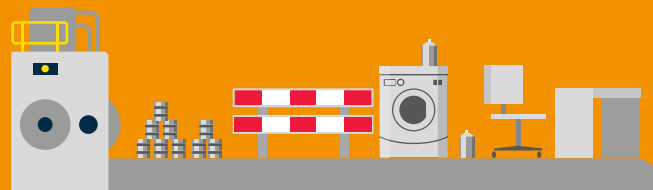


## SPENDING POWER

Nearly all **1p, 2p, 5p and 10p** UK coins in circulation originate from steel made in Port Talbot and are further processed at our Wednesfield site.

## STEEL IS THE FOUNDATION TO OUR SOCIETY

Our UK made steel is everywhere around us, even in places you might not expect like crash barriers, food cans, aerosols, aeroplane undercarriages, tumble dryers, tractors and office furniture.



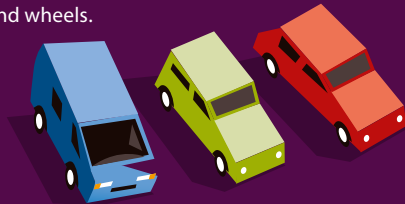
## LANDMARKS AND LEGENDS

Nearly **1000 tonnes** of steel galvanised at our Shotton site went into The Shard, which is Western Europe's tallest building. **300 tonnes** of steel tubes produced at our Corby and Hartlepool plants were used in The Kelpies, two monumental steel sculptures standing 30 metres high in Falkirk, Scotland.



## LIGHTER, FASTER, SAFER TRANSPORT

Tata Steel UK supplies almost **50%** of UK carmakers' steel requirements – everything from body panels and chassis to engine components and wheels.



## BACKING WINNING BRANDS

Many leading car manufacturers use our steel. The Zodiac Line at our Llanwern plant for example supplies Nissan with coil that is used to produce the exterior body panels of some of its models.

## LEAN AND GREEN

Steel is the most recycled packaging material and can be used and recycled infinitely with no loss of quality.

Tata Steel has its own rail terminal which supplies steel coil for customers in the West Midlands, the main steel-consuming region of the UK.

**19** trains a week transporting

**750,000** tonnes



which means **30,000** fewer lorry journeys a year!



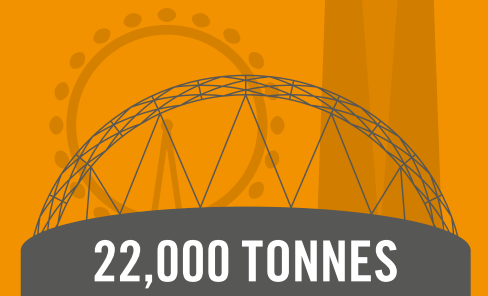
## BREAKING RECORDS

Port Talbot hot strip mill produced a record **3.2 million tonnes** last year, helping to improve manufacturing efficiencies.



## GOING GLOBAL

Our Hartlepool and Corby sites make steel tubes for globally famous construction projects, including part of the **22,000 tonnes** of steel products used in total in London's Wembley Stadium. Other iconic structures using our steel tubular products include the London Eye, Arsenal's Emirates Stadium, the Singapore Sports Hub, the Middle East Louvre and the New York Freedom Tower.



**22,000 TONNES**

## KEY MARKETS

Key markets served by Tata Steel's UK business include automotive, construction, lifting and excavating, energy and power and aerospace.

